



Vanilla and Sesame Court, Curlew Street
London, SE1



Beyond your expectations

Three bedrooms with large terrace in Shad Thames.

Hamptons International

41 Shad Thames, Tower Bridge, London, SE1 2NJ

Sales. 020 7407 3173

towerbridge@hamptons-int.com

www.hamptons.co.uk

3 Bedrooms | 1109 Sqft | Private Parking | Lift | 42 Ft Terrace

Asking Price £1,349,000 Leasehold

Description

Stylishly refurbished by its two architect owners, this three bedroom 5th floor apartment epitomises elegance and good taste. Providing three bedrooms, two bathrooms and a large diner / reception, it benefits from one of the largest roof terraces in Shad Thames. Lift and parking included.

Specification List

Kitchen

Designer kitchen with fully integrated appliances
High quality Miele appliances throughout
Top of the range Elica extractor fan
Artemide Tolomeo Mega wall mounted light
Glass splashback throughout

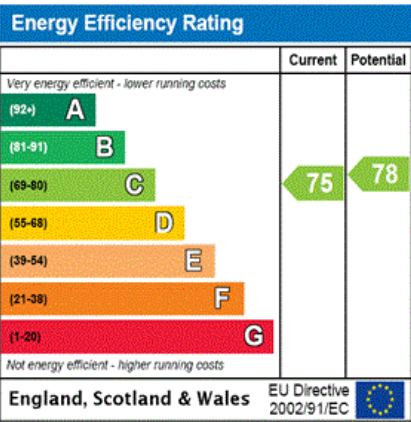
Bathrooms

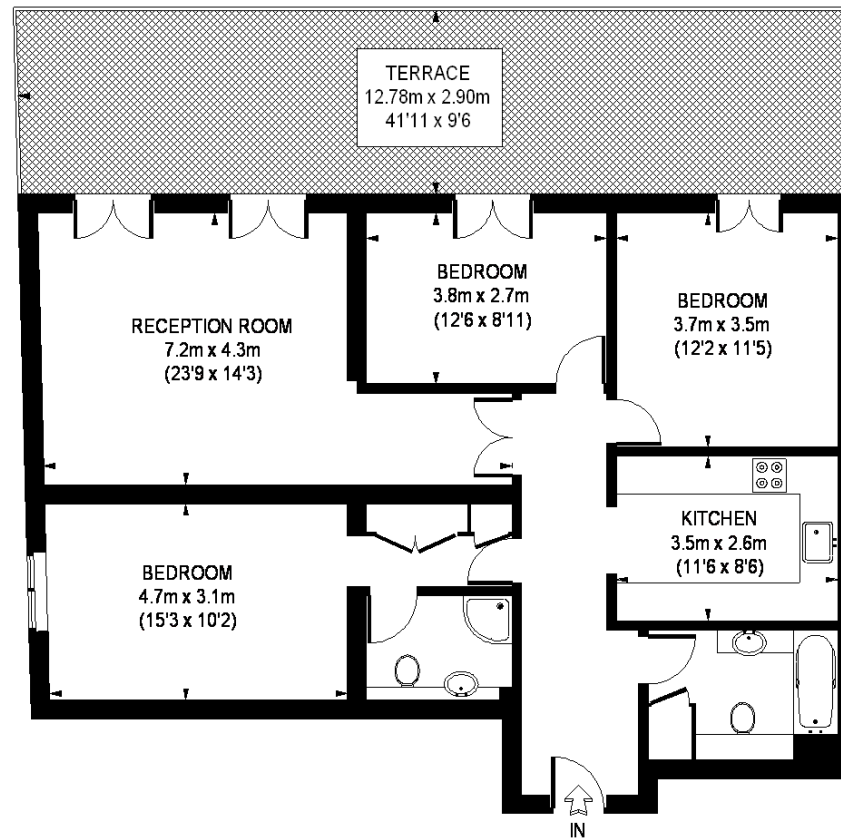
Custom cut Italian Marble (Striato Olimpico)
High end Duravit & Vitra designer bathroom suites Axor fittings designed by Philip Stark for Hansgrohe

Terrace

Landscape design and installation by landscape architects Kennedy Song Dusoir (Kew)
Fully automated irrigation system, installed and maintained by Waterwell Ltd. (M&G Investment Garden - Chelsea Flower Show Gold Medal - 2016).
Throughout

Oak Floors Throughout





**VANILLA AND
SESAME COURT**



FIFTH FLOOR

APPROXIMATE GROSS INTERNAL AREA = 1109 SQ. FT. (103 SQ. M.)

This plan is for layout guidance only. Not drawn to scale unless stated. Windows & door openings are approximate. Whilst every care is taken in the preparation of this plan, please check all dimensions, shapes & compass bearings before making any decisions reliant upon them.

FOR CLARIFICATION We wish to inform prospective purchasers that we have prepared these sales particulars as a general guide. We have not carried out a detailed survey, nor tested the services, appliances and specific fittings. Room sizes are approximate and rounded: they are taken between internal wall surfaces and therefore include cupboards/shelves, etc. Accordingly, they should not be relied upon for carpets and furnishings. Formal notice is also given that all fixtures and fittings, carpeting, curtains/blinds and kitchen equipment, whether fitted or not, are deemed removable by the vendor unless specifically itemised within these particulars.

