



Oxford Gardens, London  
W10



*Beyond your expectations*

# Raised ground floor one bedroom flat with terrace

**Hamptons International**

301 Westbourne Grove, London, W11 2QA

Sales. 020 7034 0404

nottinghill@hamptons-int.com

[www.hamptons.co.uk](http://www.hamptons.co.uk)

**Asking Price £950,000** Share of Freehold

## Description

A delightful raised ground floor one bedroom flat in a period building. The flat maintains a number of period features including high ceilings and wooden floors. There is a terrace which can be accessed through the kitchen and reception room.

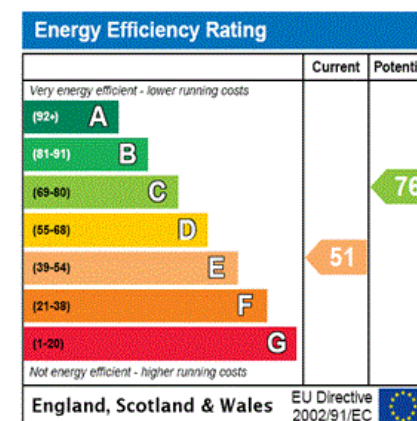
## Location

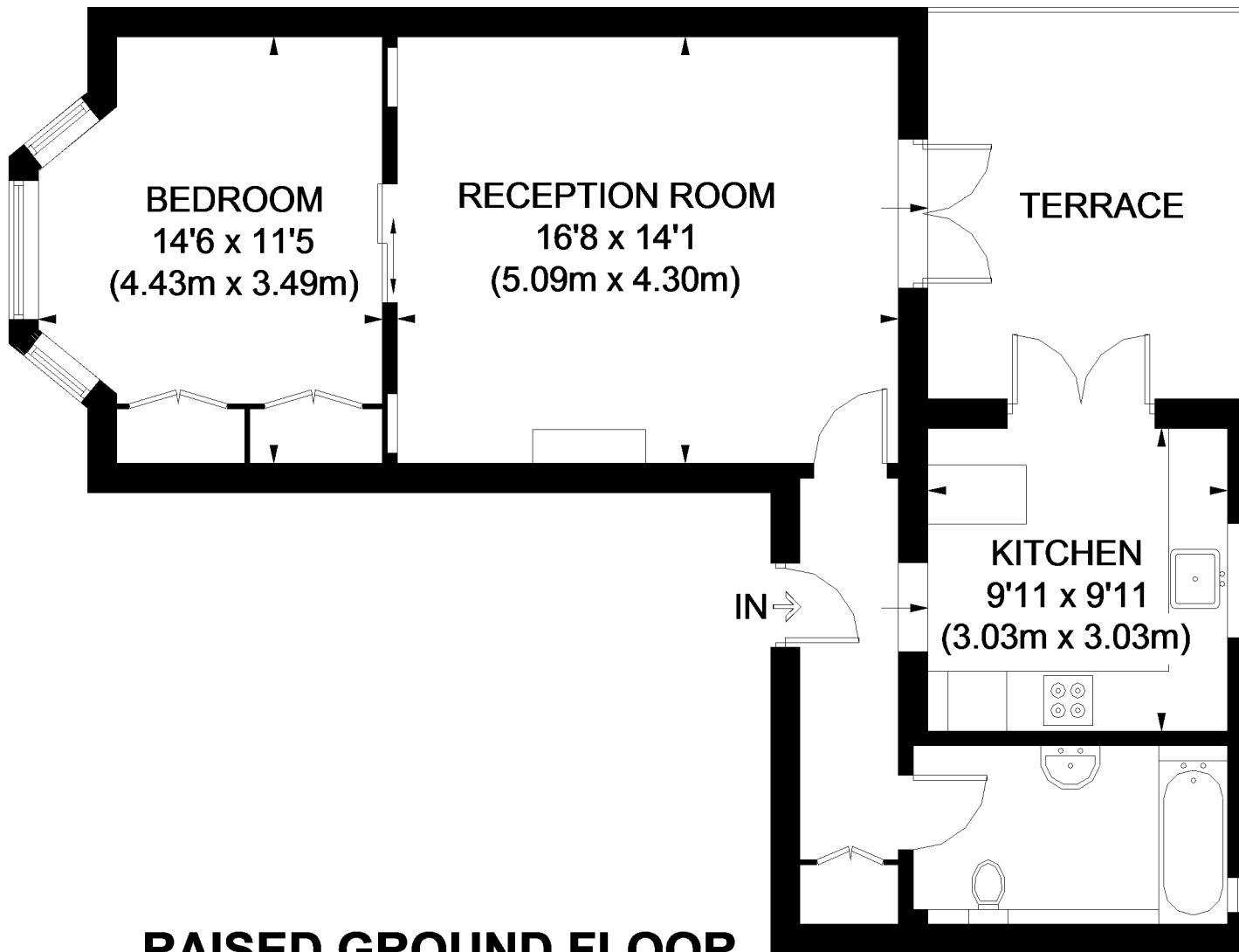
The flat is situated in on a residential street within easy reach of the world famous Portobello Road. Ladbroke Grove Underground is the nearest station for the Hammersmith & City and Circle Lines.

## Additional Information

Call us between our extended opening hours of 6 - 9PM Monday to Thursday to arrange an appointment.

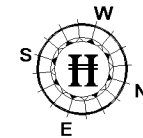
Please note: Photographs used are from previous marketing.





## RAISED GROUND FLOOR

## OXFORD GARDENS



APPROXIMATE GROSS INTERNAL AREA  
630 SQ. FT. (58.5 SQ. M.)

This plan is for layout guidance only. Not drawn to scale unless stated. Windows and door openings are approximate. Whilst every care is taken in the preparation of this plan, please check all dimensions, shapes and compass bearings before making any decisions reliant upon them. Please be advised that Hamptons International / our agents have not seen or reviewed any building regulations or planning permission in relation to works carried out to the property (ID231213)

**FOR CLARIFICATION** We wish to inform prospective purchasers that we have prepared these sales particulars as a general guide. We have not carried out a detailed survey, nor tested the services, appliances and specific fittings. Room sizes are approximate and rounded: they are taken between internal wall surfaces and therefore include cupboards/shelves, etc. Accordingly, they should not be relied upon for carpets and furnishings. Formal notice is also given that all fixtures and fittings, carpeting, curtains/blinds and kitchen equipment, whether fitted or not, are deemed removable by the vendor unless specifically itemised within these particulars.



