



Long Park Close, Chesham Bois
Amersham, Buckinghamshire, HP6



Beyond your expectations

Set in idyllic south facing gardens, perfect for family living...

5 Bedrooms | 3 Bathrooms | Bedroom 6/Games Room | Entrance Hall | 4 Reception Rooms | Open Plan Kitchen Dining | Utility Room | Garage | Carport | Driveway Parking

Guide Price £1,750,000 Freehold

Description

Home to the former influential Henrietta Busk, pioneer in women’s education. Bois Cottage built in the 1920’s still retains its immense charm in the beautiful wooded parish of Chesham Bois. Now providing a spacious contemporary home that lends itself to entertaining and true family life. The internal accommodation offers four bright and airy receptions rooms with high ceilings throughout. The principal sitting room enjoys a double aspect with a Jetmaster open fire. The adjoining music room also has a decorative fireplace incorporating a wood burner and offers direct access onto the rear terrace via large casement doors. The stylish kitchen provides a wonderful atmosphere that is very much the heart of the house. Built with a range of custom made cupboards and drawers, granite worktops and a neutral tiled floor.

The adjacent dining area boasts a high degree of natural light from the large roof lantern and full width windows and doors that lead onto the rear terrace and garden. The large utility room provides ample space for multiple machines and storage that is set away from the kitchen. Situated on the first floor are 5 very large double bedrooms and three individual, contemporary styled bathroom suites. There is a large 24’games room that could easily be incorporated as an additional bedroom with en suite facility or self-contained annex.

Outside

The house is accessed through a five bar gate and provides ample space for multiple cars and space to the

side for a boat or trailer with wood store under the car port. Of particular note are the beautiful south facing organic gardens, landscaped and maintained by the current owners. A productive vegetable garden, insulated summer house, box hedging, lawns, well stocked flower beds, native and specimen trees and hedging that provides a high degree of seclusion.

Location

The property boasts a most sought after location in the heart of Chesham Bois with pedestrian access to the nearly picturesque woods and cricket common. Situated within one mile are a variety of shops and amenities at Amersham on the Hill including Marks and Spencer and Waitrose. The train station at Amersham is within walking distance and provides Metropolitan line services to Baker Street, whilst the over ground Chiltern Line links to London Marylebone. Amersham lies within 7 miles from the M25 at junction 18 (Chorleywood) and 6 miles from junction 2 of the M40 at Beaconsfield. The area is also renowned for its excellent state and private schools. Bois Cottage is in the catchment area for Chestnut Lane School, Elangeni School as well as Dr Challoner’s Grammar school for boys and the High School for girls in Little Chalfont.

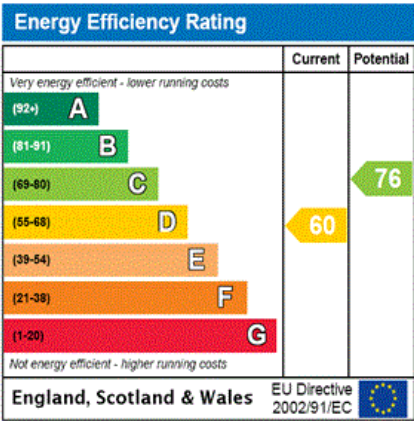
Hamptons International

3 Sycamore Road, Amersham, Bucks, HP6 5EQ

Sales. 01494 216002

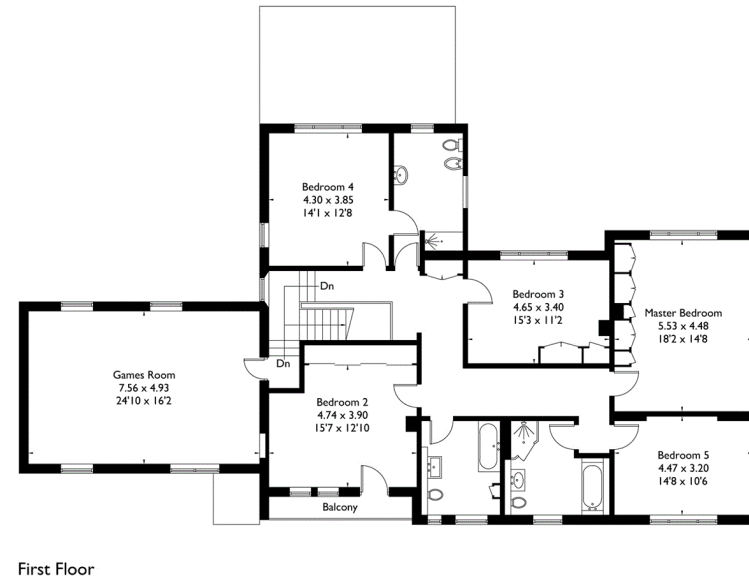
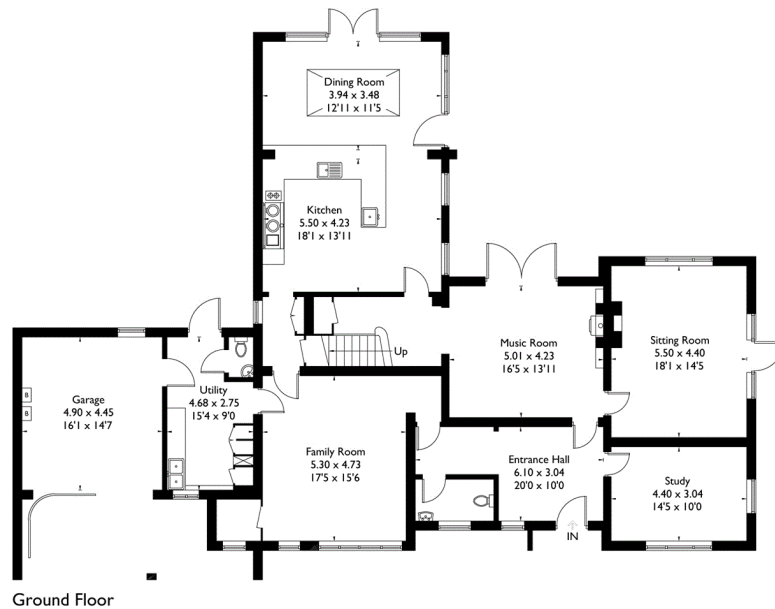
amersham@hamptons-int.com

www.hamptons.co.uk



Long Park Close, Amersham

Approximate Gross Internal Area = 408.7 sq m / 4399 sq ft
(Including Garage)



FLOORPLANZ © 2015 0845 6344080 Ref: I53305

This plan is for layout guidance only. Drawn in accordance with RICS guidelines. Not drawn to scale unless stated. Windows & door openings are approximate. Whilst every care is taken in the preparation of this plan, please check all dimensions, shapes & compass bearings before making any decisions reliant upon them.

FOR CLARIFICATION We wish to inform prospective purchasers that we have prepared these sales particulars as a general guide. We have not carried out a detailed survey, nor tested the services, appliances and specific fittings. Room sizes are approximate and rounded: they are taken between internal wall surfaces and therefore include cupboards/shelves, etc. Accordingly, they should not be relied upon for carpets and furnishings. Formal notice is also given that all fixtures and fittings, carpeting, curtains/blinds and kitchen equipment, whether fitted or not, are deemed removable by the vendor unless specifically itemised within these particulars.

