

EPC Awaited



bridgfords
PRESTIGE

Apartment 43, 20 Benbow Street, Sale, Greater Manchester, NA, NA, M33 7GG
Asking Price £119,000



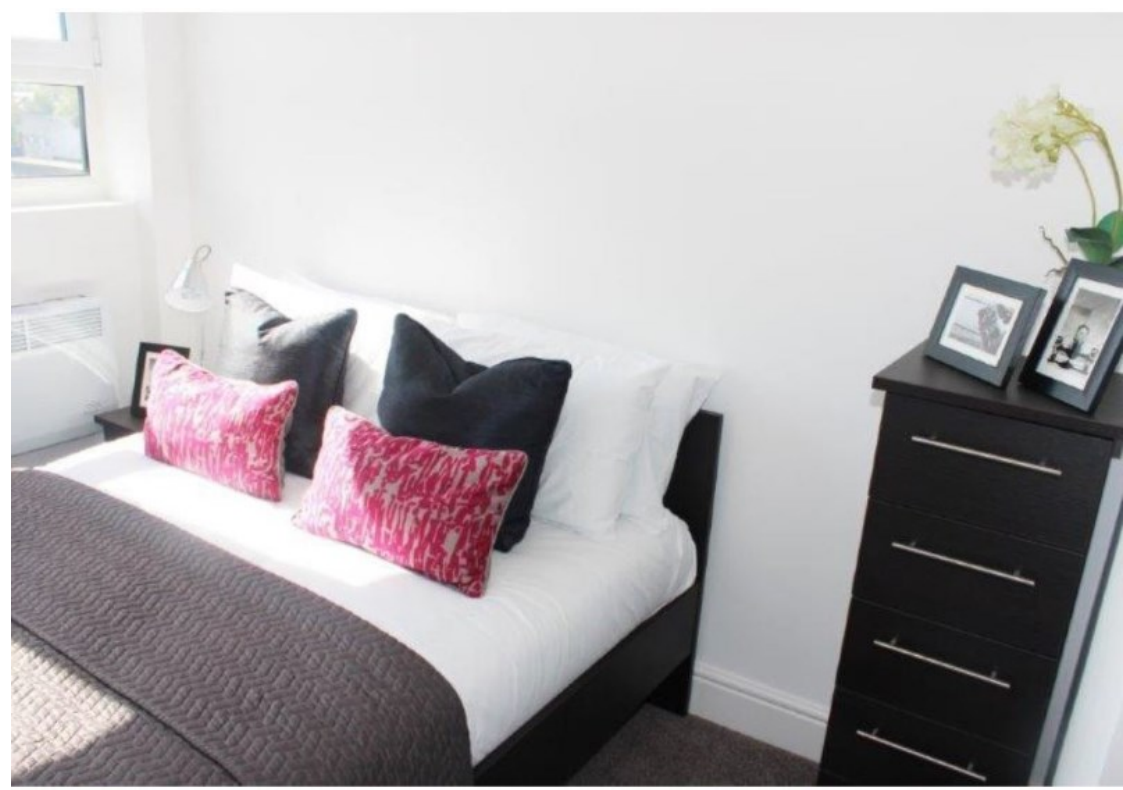


This two bedroom apartment would make for the ideal investment or starter. Being offered for Sale by Auction.

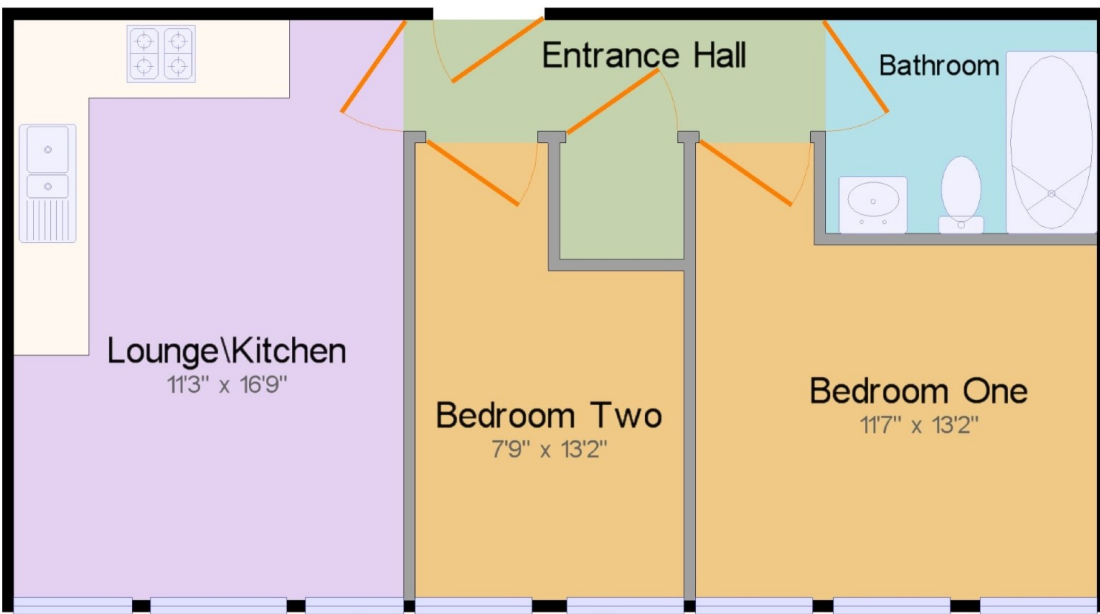
Located on Benbow Street, within the centre of Sale. A hotspot for professionals due to it's PRIME location. An abundance of local shops, bars and restaurants all within a stones throw away or a short walk to Sale Metrolink station connecting you to the likes of Manchester City Centre or Altrincham.

Major motorways and local road networks also make for an easy commute to Trafford Centre, Wythenshawe Hospital and Manchester Airport.

FOR SALE BY CONDITIONAL ONLINE AUCTION in partnership with SDL Auctions Full terms and conditions are available on the SDL Auctions website. We are pleased to present this property within the popular Acre House development. Finished to a modern standard, this property would make for the ideal home or investment. The property comprises of; Open plan lounge/kitchen, two double bedrooms and a well presented bathroom. Stunning views over South Manchester.







Ground Floor



Viewing arrangement by appointment 0161 962 6727

sale@bridgfordscountrywide.co.uk

Bridgfords, 81-83 School Road, Sale

<https://www.bridgfords.co.uk>



 Land & New Homes | Auctions | Mortgage Services | Surveys | Conveyancing

Interested parties should satisfy themselves, by inspection or otherwise as to the accuracy of the description given and any floor plans shown in these property details. All measurements, distances and areas listed are approximate. Fixtures, fittings and other items are NOT included unless specified in these details. **Please note that any services, heating systems, or appliances have not been tested and no warranty can be given or implied as to their working order.**

A member of Countrywide plc. Countrywide Estate Agents, trading as Bridgfords. Registered in England No. 789476 | Code Bridgfords EA_10502_SAL200292_PR8PLa

